

# Shivapuri Heights Cottage, Nepal



## Nepal - Extension Options



While in Kathmandu, why not experience a private, home-away-from-home at Shivapuri Heights Cottage. Only a 20-30 minute drive, plus a short walk away from Kathmandu city centre, it is an ideal escape from the hurly burly of the city. A 'homestay' style property, Shivapuri Heights is located in two acres of land at an altitude of 1,830m/6,000ft on the edge of the protected Shivapuri Reserve, with terraced gardens and beautiful views looking down into the Kathmandu Valley.

There are several lovely short walks available from the cottage while longer walks or excursions can also be arranged including a visit to the Shivapuri Naiki Monastery, a walk into the Shivapuri Reserve or a hike up to Shivapuri peak. Cookery lessons and massages are also available during a stay.

Shivapuri Heights comprises - Poinsettia cottage with three rooms, a dining/lounge area and large sun terrace; as well as a smaller cottage and house which both have two attractive rooms. Breakfast and dinner are included in stays and meals are produced using freshly grown local ingredients.



Accredited  
Agent

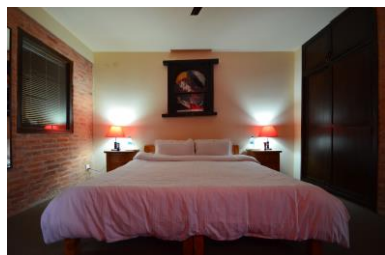


tel: 01453 844400

fax: 01453 844422

info@mountainkingdoms.com

www.mountainkingdoms.com



Jasmin House - double



Poinsettia Cottage - double



Bougainvillea Cottage

## Accommodation and Prices

All rates include breakfast and dinner (set menu taken together with other guests) and unlimited tea and coffee. Lunches are available if required, payable locally.

### Rooms:

Jasmin House - Deluxe double room with attached bathroom and private veranda.

Sharing a double: £110 per person per night / in a single: £165

Poinsettia Cottage/Bougainvillea Cottage - Double room with attached bathroom.

Sharing a double: £90 per person per night / in a single: £130

### Exclusive use of whole cottage:

Main Poinsettia Cottage - 3 rooms, 2 bathrooms, lounge area.  
Suitable for max 6 persons: £425 per night

Bougainvillea Cottage - 2 rooms, 1 bathroom, separate garden.  
Suitable for 2 adults and 2 children: £210 per night

**Transfers:** one way cost: £20 per person  
(from/to Kathmandu airport or a city hotel)

### Activities:

Guided walks - from £25 per person

Cookery lesson - £30 per person

Massage (90 minutes) - £45 per person

*All prices in this leaflet are valid until 31<sup>st</sup> December 2020*

*“Staying at Shivapuri was also really an inspired idea as our toddler son simply adored the dogs, roosters, the gardens and the simple trekking. Very nice couple. Food etc was also nice up there and it is a great place to unwind.”*

- Mr C, Malaysia

Mountain Kingdoms Ltd, 20 Long Street, Wotton-under-Edge, Gloucestershire, GL12 7BT  
tel: 01453 844400 email: info@mountainkingdoms.com  
www.mountainkingdoms.com

Last updated: 03/01/2020